



*Engineering Superior
Solutions for
Technology and
Equipment Control*

For more information on
**Tompkins Warehouse
Control System**, contact:

**Tompkins Emerging
Technology Center**

(407) 362-0362
etc@tompkinsinc.com
www.tompkinsinc.com

Tompkins Warehouse Control System integrates information systems (such as WMS) to real-time control of all equipment in your distribution center. Standard control systems move product, but do not provide efficient information flow. For *real* control of warehouse operations, you need flexible, timely display of information combined with equipment control – as provided by the Tompkins Warehouse Control System (TCS).

The Latest Equipment and Technology

*The **System Controller** provides the highest level of facility material handling control.* The system controller receives instructions and work orders from the warehouse management level, and interprets them to execute necessary physical operations. It can perform wave optimization. It can

Tompkins Warehouse Control System is an integrated system that adapts to virtually any type of warehouse automation to provide real-time control throughout your supply chain.

TCS Advantages

With the TCS, you can:

- Provide up-to-the-minute data to your warehouse supervisors.
- Improve existing facility automation.
- Work-balance according to demand and capacity.
- Consolidate and centralize control of process automation.
- Reduce labor requirements and associated costs.
- Increase visibility to plant floor operations.
- Provide a single interface point between automation equipment and host systems.

Uniquely Adaptable and Robust

The TCS adapts to virtually any type of machine control. No matter what type of conveyor, pick-to-light, or other equipment in your warehouse, the TCS can be configured to each. The system supplies a seamless flow of data between the warehouse floor level and facility management, creating real-time reports on operational history, equipment status, and even peak order seasons. And TCS has reliability designed into the system.

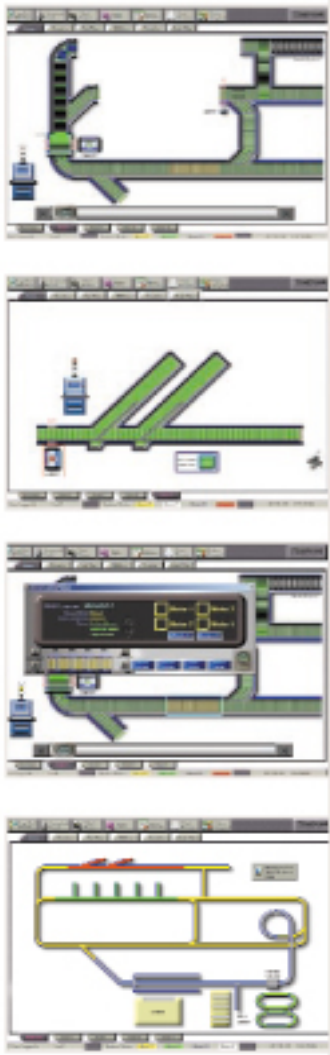
balance work according to capacity and demand. The system controller gives you the ability to unlock the data inherent in your system, providing real-time operational intelligence.

The system controller provides web-based reports on operational status and metrics, alarm conditions, and transactions to the facility management levels. It also interfaces to communicate with legacy systems and provides data and program redundancy for your facility and operational area controllers.

*The **Area Controllers** are a series of operational area controllers below the system controller.* Individual PC-based controllers manage a logical grouping of physical equipment. Area controllers are housed in industrial cabinets and have a Windows platform, flat-panel display, input/output devices with drivers to support the equipment operated, and an Uninterruptible Power Supply (UPS). The area controllers can support a variety of communication methods including Direct I/O, TCP/IP, Serial, and DeviceNet.

Area controllers can be combined with existing PLC-based control to provide a flexible, expandable system.

For real control of warehouse operations



Machine Controllers are the lowest level of the TCS. They are operational devices providing machine control. These devices include scanners, drive motors, photo-eyes, or other sensors and actuators needed to physically perform material handling functions.

Machine controllers can control a variety of systems, including material handling, manufacturing, and process equipment applications.

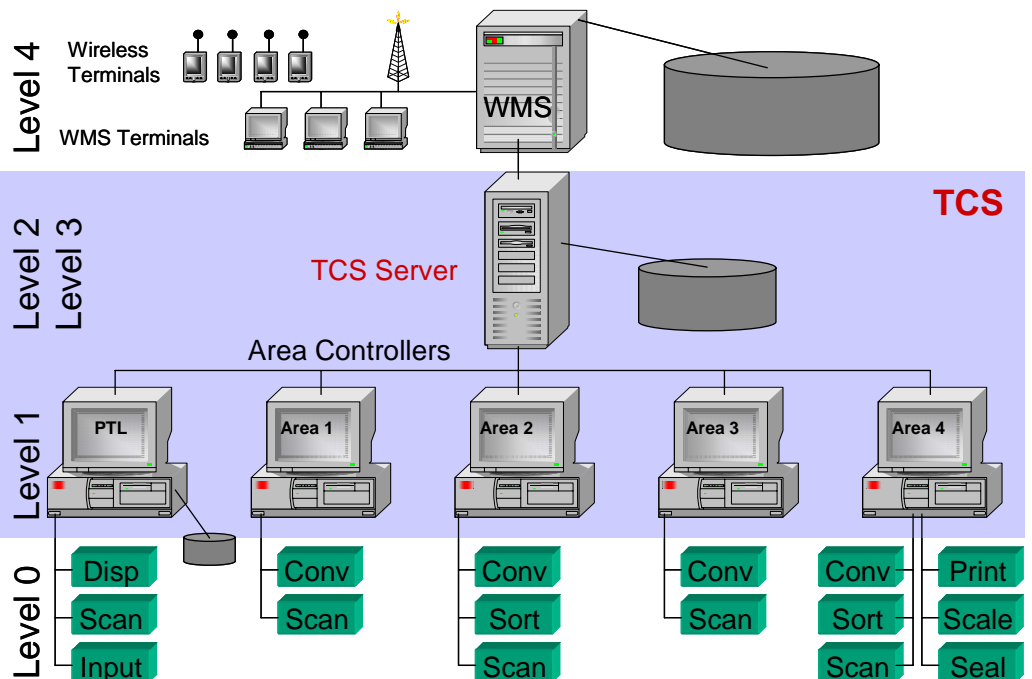
The *Graphical User Interface (GUI)* provides real-time monitoring of system status and rapid problem resolution. Accessible from any point on the network, the GUI allows you to choose commands, start programs, and see lists of files and other options by pointing to icons and menus on the screen.

The GUI indicates material handling equipment status and important operating conditions. You are able to see and resolve facility problems immediately.

The TCS is the crucial link between enterprise, WMS, and the real-time control of material handling equipment on the warehouse floor. And it is only available from Tompkins Associates.

For real control of warehouse operations, you need the Tompkins Warehouse Control System—The Crucial Integration Link.

Basic Architecture: Tompkins Warehouse Control System



For more information on Tompkins Warehouse Control System, contact:

Tompkins Emerging Technology Center

(407) 362-0362
etc@tompkinsinc.com
www.tompkinsinc.com